

Canon

Delighting You Always

PRO

THE **ART** OF PROFESSIONAL PHOTO PRINTING

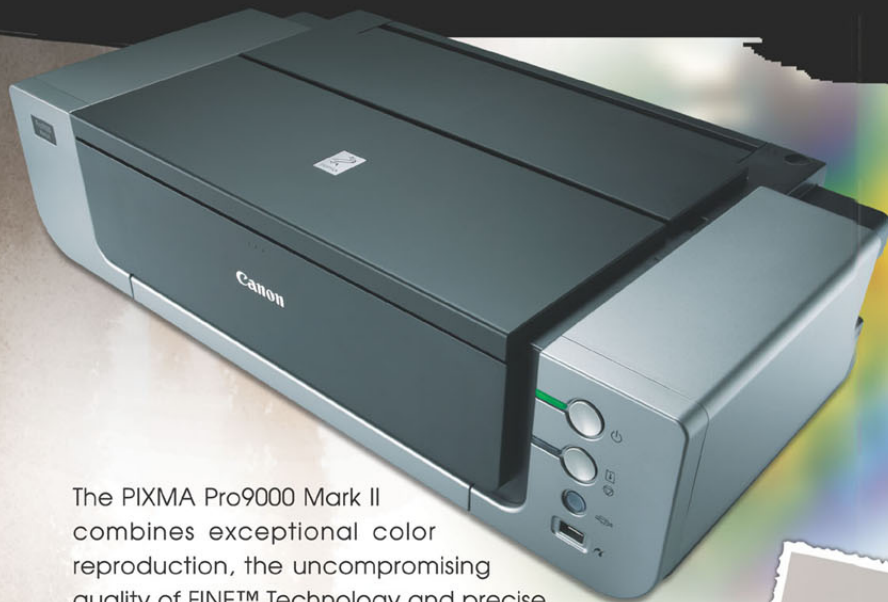
How To Achieve The Most Intensely
Dramatic Colors Imaginable!



PIXMA Pro 9000 Mark II

8-COLOR
DYE-INK SYSTEM

THE CONSUMMATE PROFESSIONAL

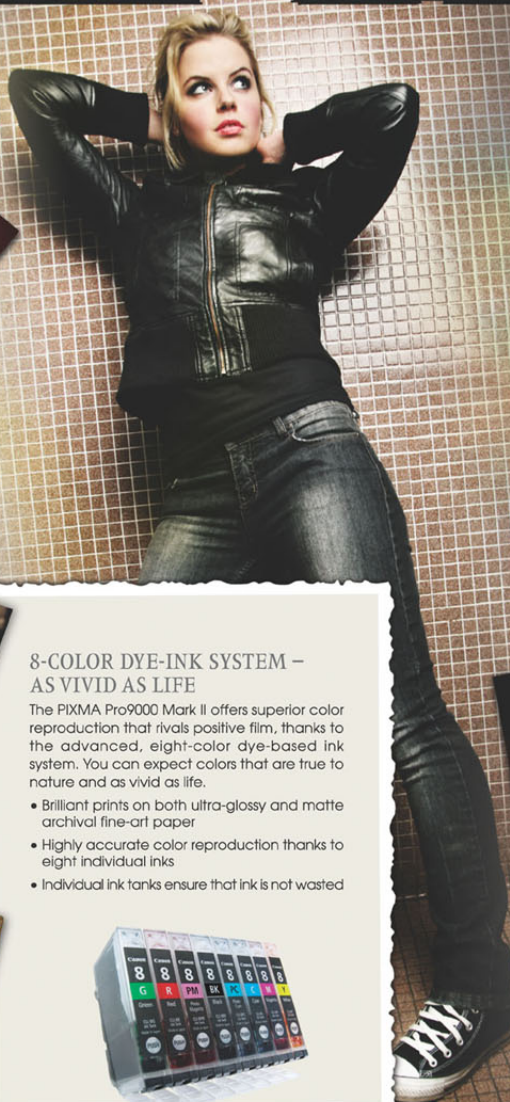


The PIXMA Pro9000 Mark II combines exceptional color reproduction, the uncompromising quality of FINE™ Technology and precise color management to produce brilliant, professional-quality prints. It features an advanced, eight-color dye-ink system that rivals positive film in terms of color accuracy. And if you think big, you can print dramatic, large-size photos up to 14x17". Moreover, this remarkable printer is faster than ever before. Ensure that all your images realize their full artistic potential with the consummate professional – the Canon PIXMA Pro9000 Mark II.

PIXMA Pro 9000 Mark II



Pro9000 Mark II – FASHION YOUR OWN ART



8-COLOR DYE-INK SYSTEM – AS VIVID AS LIFE

The PIXMA Pro9000 Mark II offers superior color reproduction that rivals positive film, thanks to the advanced, eight-color dye-based ink system. You can expect colors that are true to nature and as vivid as life.

- Brilliant prints on both ultra-glossy and matte archival fine-art paper
- Highly accurate color reproduction thanks to eight individual inks
- Individual ink tanks ensure that ink is not wasted



FEATURES

HIGH-SPEED PRINTING

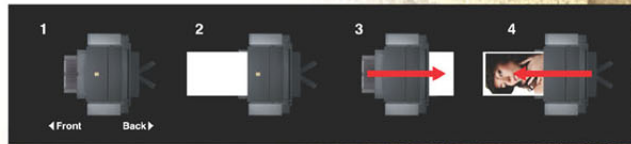
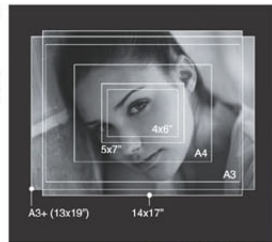
- The PIXMA Pro9000 Mark II can print an A3+ black-and-white photo **3 times faster** than was previously possible
- Increased speed is supported by an improved drive motor system and a more accurate paper-feeding mechanism
- New Double Encoder System improves handling accuracy and speed for borderless printing

DIMINISHED "GLOSS UNEVENNESS"

- The PIXMA Pro9000 Mark II reduces gloss unevenness through improved paper-feeding accuracy and a more precise printing-control mechanism

FRONT PAPER FEEDING FOR THICK OR LARGE-SIZED MEDIA

- Manual feeding from the front allows for the use of thicker, larger media
- Supports wide papers up to 14 x 17" (356 x 432mm)
- Supports Fine Art papers and other media up to 1.2mm thick



EASY-PHOTOPRINT PRO – EXPANDED CREATIVE CONTROL

NEW AMBIENT LIGHT CORRECTION – IDEAL FOR EXHIBITION DISPLAY

The new Ambient Light Correction (ALC) feature reduces perceived color differences caused by lighting variations between the printing and viewing environments.

- ALC takes into account the type of light under which prints are to be viewed
- Ensures that your photos look their absolute best under exhibition lighting

Working environment
(high-color rendering / sunshine 5000K)

Printed with Ambient Light Correction
(Color looks different from original)



Viewing environment
(three-band fluorescent lamp / warm white 3000K)

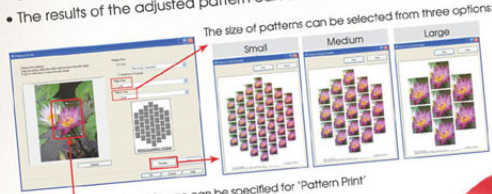
Color looks the same as original



ADVANCED PATTERN PRINT

Pattern Print creates multiple thumbnails of a single image, each with a slight variation in color parameters as specified by the user. Thus, you can fine-tune color balance and determine the optimum color correction.

- You can now choose from three sizes of patterns
- A precise area within an image can even be specified for precise color correction
- The results of the adjusted pattern can also be previewed before printing



Certain area of a single image can be specified for "Pattern Print"



DVD/CD DIRECT PRINTING

- Print text and images directly onto printable DVDs and CDs



RED-EYE CORRECTION

- Removes the unsightly red-eye effect that can occur during flash photography
- Returns eyes to their original color for more naturally expressive photos



ENHANCED PICTBRIDGE FUNCTIONS – EASY CONNECTIONS & EXPANDED CONTROL

- Allows "paper type" settings from "Photo" to "Semi-Gloss"
- Use manual color adjustment to customize colors: Natural, Natural M, Black & White, Cool Tone and Warm Tone
- Use Face Brightener to optimize the faces of your subjects

SOLID DESIGN – IMPROVED FORM & FUNCTION

- Emblem Plates have been upgraded from plastic to Electroform (metal) for a more sophisticated look
- New Rear Tray Cover prevents foreign objects from entering the machine and causing paper jams

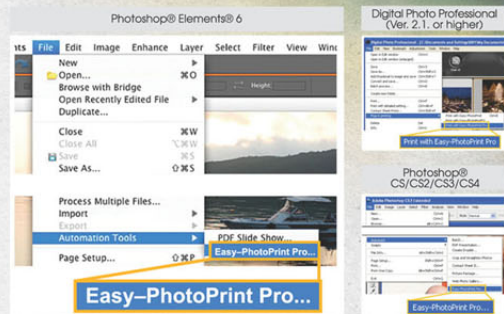




NEW ADOBE PHOTOSHOP ELEMENTS 6

The PIXMA Pro9000 Mark II is now bundled with Adobe Photoshop Elements 6

Together with the Easy-PhotoPrint Pro plugin, perform a myriad of advanced operations quickly and easily within the same application—from editing images to printing



GRAYSCALE AND TONED PRINTS

Using Easy-PhotoPrint Pro, you're in complete creative control when it comes to grayscale and tonal prints.

Simple to achieve Pure Grayscale, Cool-Tone Monochrome or Warm-Tone Monochrome with 100 levels of adjustment



Cool tone Black and White Warm tone

PROFESSIONAL COLOR MANAGEMENT

Linear Tone – Maintains the image's original properties for hue, gradation, contrast and brightness after retouching so image adjustments are made with complete accuracy

Photo Color – Make color adjustments based on how you remember the actual environment; Blues and Greens are especially fresh and natural

Easy To Print RAW Images – Use Easy-PhotoPrint Pro with Canon's Digital Photo Professional to print RAW images individually or in multiples on a single sheet of paper – without converting to TIFF or JPEG

THE FINE ART OF PHOTO MEDIA

Support an exciting array of high-quality photo and Fine Art paper, including a wide range of non-Canon Fine Art media

NEW CANON PHOTO PAPER

The ultimate glossy photo paper. Make your prints come alive in vibrant, vivid colors, thanks to an expanded red spectrum. Photo Paper Pro Platinum offers a paper thickness unrivaled among commercial photo papers, and exceptional print quality for truly unforgettable photos.

Photo Paper Pro Platinum PT-101



Photo Paper Pro II PR-201

This professional, high-gloss photo paper produces truly remarkable, high-quality photo prints that are virtually indistinguishable from professional lab results.

FINE ART PAPER



Fine Art Paper Museum Etching FA-ME1



Fine Art Paper Photo Rag FA-PR1



Fine Art Paper Premium Matte FA-PM1

PIXMA Pro9000 Mark II SPECIFICATIONS

Print		Color PR-201/Standard	approx. 1min. 23sec.
Speed*1	Photo (11x14" image on A3+ with Border)	Grayscale PR-201/Standard	approx. 0min. 30sec.
		Color FA-PR1/Standard	approx. 3min. 5sec.
Resolution (dpi)*2	Photo (4x6")	Grayscale PR-201/Standard	approx. 0min. 25sec.
		Color PR-201/Borderless	approx. 25sec.
Min. Ink Droplet Size		4800 x 2400dpi	2pl (min.)
Number of Nozzles		6144	
Cartridge Type		CLi8 G / R / PM / BK / PC / C / M / Y	
Printable Width		Front Tray	Up to 348.8mm; Borderless: Up to 355mm
		Rear Tray	Up to 322.2mm; Borderless: Up to 329mm
Borderless Printing*3		Top / Bottom / Right / Left margin: 0 mm (Supported Paper Size: A3+ / A3 / A4 / 14x17" / 10x12" / 8x10" / 4x6")	
Recommended Printing Area		Top margin: 35mm / Bottom margin: 30.5mm	
		*When printing on Fine Art Paper (Photo Rag, Premium Matte, Museum Etching) and Other Fine Art Paper: Top margin: 35mm / Bottom margin: 35mm	
Applicable Media Sizes		A3+ / A3, A4, Letter, Legal, Ledger, A5, B5, Envelopes (DL, COM10), 4x6", 5x7", 8x10"	
Photo Direct		PictBridge compliant digital cameras, camcorders and camera phones	
Camera Direct	Compatible Digital Cameras	JPEG (Ext. ver 2.2 / 2.21 compliant)	
Paper Handling		Rear Tray	
		Plain paper	A3 / A4 = 150
		High Resolution Paper (HR-101N)	A3+ = 20, A3 = 50, A4 = 80
		Photo Paper Pro Platinum (PT-101)	A3+ = 1, A3 / A4 / 8x10" = 10, 4x6" = 20
		Photo Paper Pro II (PR-201)	A3+ = 1, A3 / A4 = 10, 4x6" = 20
		Photo Paper Plus Glossy II (PP-201)	A3+ = 1, A3 / A4 = 10, 4x6" = 20
		Photo Paper Plus Semi-gloss (SG-201)	A3+ / 10x12" / A3 / A4 / 8x10" / 10, 4x6" = 20
		Glossy Photo Paper "Everyday Use" (GP-501)	A4 = 10, 4x6" = 20
		Matte Photo Paper (MP-101)	A3 / A4 = 10, 4x6" = 20
		Photo Sticker (PS-101)	1
		Envelope	European DL and US Com. #10 = 10
		Fine Art Paper "Photo Rag™" (FA-PR1)	A3+ / A3 / A4 = 1
		Other Fine Art Paper	A3+ / A3 / A4 = 1
		Front Tray	A3 / A4 = 1
		High Resolution Paper (HR-101N)	A3+ / A3 / A4 = 1
		Photo Paper Pro Platinum (PT-101)	A3+ / A3 / A4 / 8x10" / 4x6" = 1
		Photo Paper Pro II (PR-201)	A3+ / A3 / A4 / 4x6" = 1
		Photo Paper Plus Glossy II (PP-201)	A3+ / A3 / A4 / 4x6" = 1
		Photo Paper Plus Semi-gloss (SG-201)	A3+ / A3 / A4 / 14x17" / 10x12" / 8x10" / 4x6" = 1
		Glossy Photo Paper "Everyday Use" (GP-501)	A4 / 4x6" = 1
		Matte Photo Paper (MP-101)	A3 / A4 / 4x6" = 1
		Photo Sticker (PS-101)	1
		Fine Art Paper "Photo Rag™" (FA-PR1)	A3+ / A3 / A4 = 1
		Fine Art Paper "Museum Etching" (FA-ME1)	A3+ / A3 / A4 = 1
		Fine Art Paper "Premium Matte" (FA-PM1)	A3+ / A3 / A4 = 1
		Other Fine Art Paper	A3+ / A3 / A4 = 1
CD-R Tray		DVD/CD	1 (Manual handling by the CD-R tray)
Paper Weight		Rear Tray	
		Plain Paper: 64-105 g/m ² . Canon specially paper: max paper weight: approx. 300g/m ² (Photo Paper Pro Platinum PT-101)	
		Front Tray	
		Up to 1.2mm	
System Requirements		Windows	2000 SP4 / XP SP2 / Vista
		Macintosh	OS X 10.3.9 - 10.5
General		Interface	
		USB 2.0 Hi-Speed, PictBridge	
		Canon Bundled Software	
		Canon Solution Menu Easy-PhotoPrint EX Easy-PhotoPrint Pro	
		Operating Environment	
		Temperature: 5-35°C; Humidity: 10-90% RH (no dew condensation)	
		Storage Environment	
		Temperature: 0-40°C; Humidity: 5-95% RH (no dew condensation)	
		Power	
		AC 100-240V, 50 / 60Hz	
		Acoustic Noise*4	
		Print	approx. 42.5dB (A)
		Standby (USB connection to PC)	approx. 1.2W
		OFF (USB connection to PC)	approx. 0.9W
		Printing*5	approx. 16W
		Environment	Regulation
		Eco-Label	RoHS (EU), WEEE (EU), RoHS (China)
		Energy Star	
		Weight	14.4 kg
		Dimension (W x D x H)	600 x 354 x 192mm

Specifications are subject to change without notice.
 *1. Photo print speed is based on the default setting using ISO/JS-SCD N2 on Photo Paper Pro II and Fine Art Paper "Photo Rag™" (FA-PR1). Print speed may vary depending on system configuration, interface, software, document complexity, print mode, page coverage, type of paper used etc. and does not take into account data processing time on host computer.
 *2. Ink droplets can be placed with a pitch of 1/4800 inch at minimum.
 *3. Paper types NOT supported for borderless printing are as follows:
 Plain paper, High Resolution Paper, Photo Sticker, Paper Transfer, Fine Art Paper "Photo Rag™" (FA-PR1), Fine Art Paper "Museum Etching" (FA-ME1), Fine Art Paper "Premium Matte" (FA-PM1), Other Fine Art Paper.
 *4. When printing ISO/JS-SCD N2 pattern on A6+ Photo Paper Plus Glossy II using default settings.
 *5. When printing ISO/JS-SCD N2 pattern on A4 size plain paper using default settings.



Canon

Delighting You Always

SOUTH & SOUTHEAST ASIA REGIONAL HEADQUARTERS

CANON SINGAPORE PTE. LTD.
1 HarbourFront Avenue #04-01 Keppel Bay Tower
Singapore 098632
Tel: 65-6799 8888 Fax: 65-6799 8882
www.canon-asia.com

BANGLADESH:
J.A.N. Associates
Tel: 880-2-8611444
Fax: 880-2-8610410

BRUNEI:
Interhouse Company
Tel: 673-2-653001
Fax: 673-2-653003

CAMBODIA:
Royal Cambodia Co. Ltd.
Tel: 855-23-4-28955
Fax: 855-23-7-22961

INDIA:
Canon India Pvt. Ltd.
Tel: 91-124-4160000
Fax: 91-124-4160011
www.canon.co.in

INDONESIA:
P.T. Dataclip
Tel: 62-21-6546515
Fax: 62-21-6546811
www.canon.co.id

MALAYSIA:
Canon Marketing
(Malaysia) Sdn. Bhd.
Tel: 603-78446000
Fax: 603-78450505
www.canon.com.my

MALDIVES:
SMDI Company
Tel: 960-3334421
Fax: 960-3334424

MYANMAR:
Accel International
Company Ltd.
Tel: 95-1-202092/3/4
Fax: 95-1-202079

NEPAL:
International Electronics
Concern (P) Ltd.
Tel: 977-1-4421591
Fax: 977-1-4421509

PAKISTAN:
Mega Business Machines
Tel: 92-21-2276526-8
Fax: 92-21-2276530

SINGAPORE:
Canon Singapore Pte. Ltd.
Domestic Operations
Tel: 65-6799 8888
Fax: 65-6221 7577
www.canon.com.sg

SRI LANKA:
Metropolitan Computers
(Pvt) Ltd.
Tel: 94-11-2437797
Fax: 94-11-2685222

THAILAND:
Canon Marketing (Thailand)
Co. Ltd.
Tel: 66-2-3449999
Fax: 66-2-3449967
www.canon.co.th

VIETNAM:
Canon Singapore Pte. Ltd.
Ho Chi Minh City
Representative
Office & Showroom
Tel: 84-8-8200466
Fax: 84-8-8200477
www.canon.com.vn
Hanoi Representative Office
Tel: 84-4-7711677
Fax: 84-4-7711678
www.canon.com.vn



All information contained in this brochure is correct at the time of printing. Some information could become dated due to product improvements or other changes. Canon bears no responsibility for any discrepancies.